

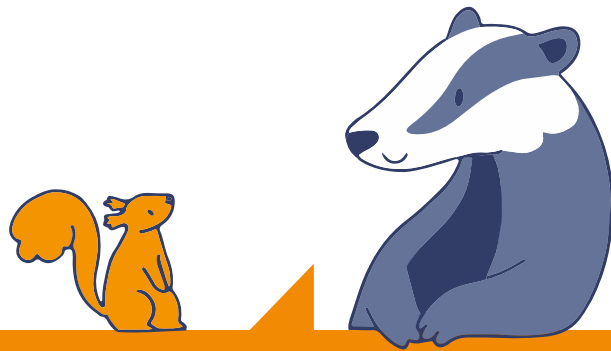
Welcome to Schwerin!

You are new to the state capital Schwerin.
Your child needs a place at a school.

Children must attend a school or vocational school from the age of 6 to 18 (compulsory schooling). Enrolment must be carried out by the parents.

Are you new to Germany and your child cannot speak German? Then enrolment at a school currently works differently.

Here you can find out what you need to do to get a school place for your child.



“Proper arrival at school in Schwerin.”



**Familien- und
Fachkräftebildung
in Schwerin**

Impressum:

Landeshauptstadt Schwerin
Der Oberbürgermeister

Am Packhof 2-6
19053 Schwerin
Telefon: 0385 545-0
Telefax: 0385 545-1019
E-Mail: info@schwerin.de
Internet: www.schwerin.de

Kontakt:

Dezernat für Jugend,
Soziales und Gesundheit
Fachstelle Chancengleichheit
„Familien- und Fachkräftebildung
in Schwerin (FaBi)“

E-Mail: integration@schwerin.de

Stand: September 2024



Finanziert von der
Europäischen Union



Family Education and
Specialist Training
in Schwerin

Information on school enrolment

in Schwerin for children and young people with a non-German mother tongue



English

School enrolment

Compulsory school attendance and first school enrolment

Compulsory schooling begins at the age of 6 for children.

Your child is or will be 6 years old: Your child must then be registered for school.

Example: All children born between 1 July 2018 and 30 June 2019 will be registered for the 2025/26 school year.

You must register your child for school at the state capital Schwerin. You can do this online or at the Citizens' Office.

School enrolment for all other children

Your child does not speak German and has already been to a school abroad. But your child has not yet been in a regular class in Germany: Your child will first be enrolled in a preparatory class.

If your child has already been in a preparatory class in another city in Germany and has not yet completed it, he or she must attend a preparatory class in Schwerin regardless.

You can enrol your child in the pre-classes here:

Regionale Schule Weststadt Campus
Schwerin
Johannes-R.-Becher-Straße 14
19059 Schwerin

Every Wednesday from 14:00 to 15:30

After enrolment, you will receive a letter from the Schwerin State Education Authority (Staatlichen Schulamt Schwerin). This letter will contain the name and the address of the school your child will be attending. This letter will also contain a date for an appointment: you must personally enrol your child at the school listed in the letter on this date.

What do I need to enrol in a pre-school class (the preparatory class)?

You will receive a form. Fill it in and hand it in during the registration for the preparatory class.

Please bring your ID with you. Please also bring your registration certificate.

Why and where do I have to register my child for vocational school?

Your child is 16 years old. The vocational schools are now responsible. Your child will now attend a vocational preparation year for foreigners.

You can register here:

Regionales Berufliches Bildungszentrum
der Landeshauptstadt Schwerin - Technik
Gadebuscher Straße 153
19057 Schwerin

Telephone: 0385 44007-0
Fax: 0385 44007-25

Counselling

I still have questions, whom should I contact?

Do you have any questions? Please contact us here:

Staatliches Schulamt Schwerin

Friedrich-Engels-Straße 47
19061 Schwerin
Telefon: 0385 58878-104

Ministerium für Bildung und Kindertagesförderung

(only for questions about vocational schools)
Werderstraße 124
19055 Schwerin
Telefon: 0385 588-17221

Landeshauptstadt Schwerin Fachdienst Bildung und Sport

Am Packhof 2-6
19053 Schwerin
Telefon: 0385 545-0
Telefon: 0385 545-2010

ATTENTION!

Your child is already enrolled in a regular class at a school in Germany? This enrolment procedure does not apply to you. Please register at the local school!